

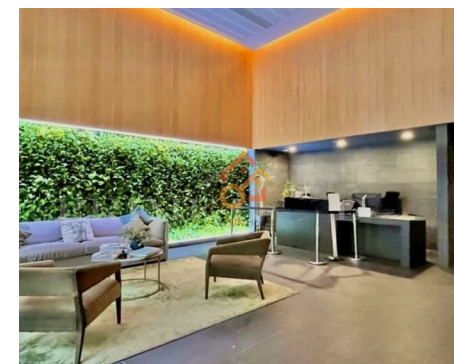
Let **UK** Home

**2 Bedrooms**

**Flat**

Located in London

**£3,199 Per Month**



[info@letukhome.co.uk](mailto:info@letukhome.co.uk)

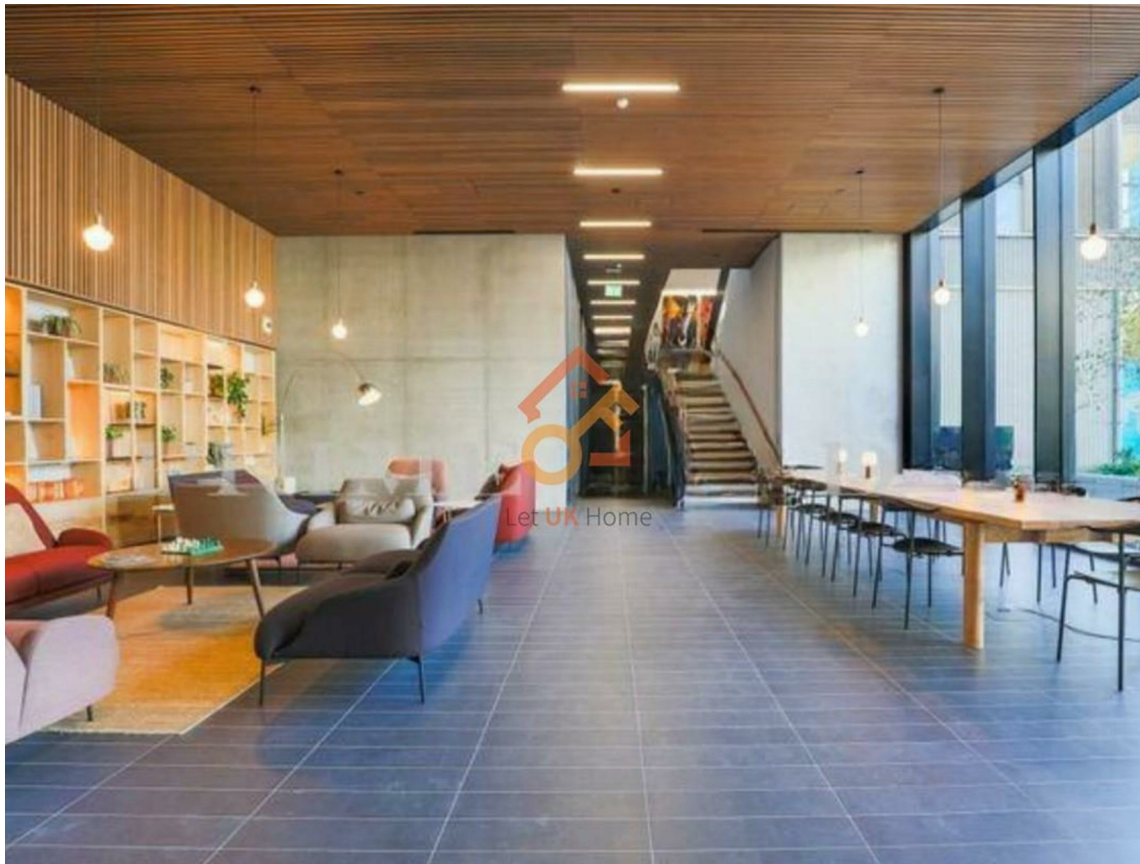
<https://www.letukhome.co.uk/>

01795 358 886



# 143 Walworth Road London

SE17 1FZ



Let UK Home are excited to offer this spectacular two bedroom apartment in the heart of Walton Heights part of the Elephant Park development.

This property comprises a large bright open plan kitchen and living room leading to a large private balcony with great views, two double bedrooms with wardrobes (master en-suite), a large family sized bathroom, and ample storage. A virtual viewing is provided.

Residents benefit from an array of facilities which will include a gymnasium, residents lounge, communal courtyards, secure cycle storage and a 24hr concierge service. There are several amenities located nearby including bars, cafés, restaurants and the Elephant and Castle Shopping Centre.

The development is located close to Elephant and Castle National Rail and Underground stations, providing Underground and Rail services for commutes towards the City and West End. The property is serviced by Thameslink, Southeastern, Bakerloo and Northern Line, opening up a plethora of transport links.

# 143 Walworth Road London

£3,199 Per Month

- 10th Floor
- 24h Security
- Residents Lounge
- Cinema & Game Room
- Virtual Viewing Available

- Concierge Service
- The Gym
- Co-working Space
- Roof Terrace





Let **UK** Home

3F 2 Eastbourne Terrace  
 Paddington  
 London  
 W2 6LG

01795 358 886

info@letukhome.co.uk

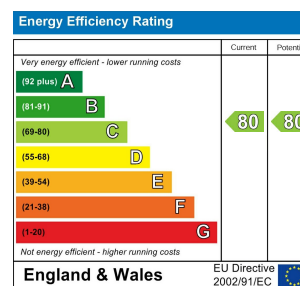


室内面积	76.5平方米	823.3平方英尺
室外面积	6.5平方米	69.8平方英尺
客厅/厨房/餐厅	5.0米 x 6.6米	16.5英尺 x 21.6英尺
主卧	3.4米 x 3.3米	11.1英尺 x 10.8英尺
次卧	4.5米 x 2.9米	14.8英尺 x 9.4英尺
阳台	2.2米 x 2.8米	7.2英尺 x 9.0英尺

**Council Tax Band: E**

**Local Authority:**

Agents Note: Whilst every care has been taken to prepare these particulars, they are for guidance purposes only. All measurements are approximate and are for general guidance purposes only and whilst every care has been taken to ensure their accuracy, they should not be relied upon and potential buyers/tenants are advised to recheck the measurements.



<https://www.letukhome.co.uk/>